

**IL32 Antibody**  
**Rabbit mAb**  
**Catalog # AP92580****Specification**

---

**IL32 Antibody - Product Information**

Application	<b>WB</b>
Primary Accession	<a href="#">P24001</a>
Clonality	<b>Monoclonal</b>
<b>Other Names</b>	
IL 32alpha; IL 32beta; IL 32delta; IL 32gamma; IL32; NK4; TAIF; TAIFa; TAIFb; TAIFc; TAIFd;	
Isotype	<b>Rabbit IgG</b>
Host	<b>Rabbit</b>
Calculated MW	<b>26676 Da</b>

**IL32 Antibody - Additional Information**

Dilution	<b>WB~~1:1000</b>
Purification	<b>Affinity-chromatography</b>
Immunogen	<b>A synthesized peptide derived from human IL32</b>
Description	<b>Cytokine that may play a role in innate and adaptive immune responses. It induces various cytokines such as TNFA/TNF-alpha and IL8. It activates typical cytokine signal pathways of NF-kappa-B and p38 MAPK.</b>
Storage Condition and Buffer	<b>Rabbit IgG in phosphate buffered saline , pH 7.4, 150mM NaCl, 0.02% sodium azide and 50% glycerol. Store at +4°C short term. Store at -20°C long term. Avoid freeze / thaw cycle.</b>

**IL32 Antibody - Protein Information****Name** IL32**Synonyms** NK4, TAIF**Function**

Cytokine that may play a role in innate and adaptive immune responses. It induces various cytokines such as TNFA/TNF-alpha and IL8. It activates typical cytokine signal pathways of NF-kappa-B and p38 MAPK.

**Cellular Location**

Secreted.

**Tissue Location**

Selectively expressed in lymphocytes. Expression is more prominent in immune cells than in

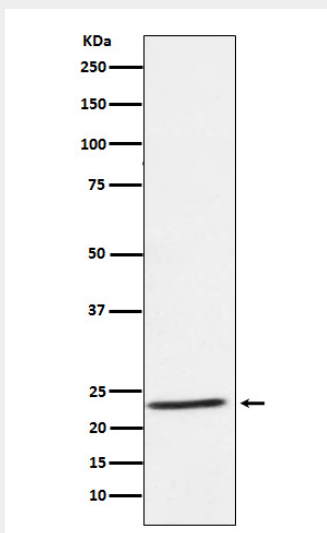
non-immune cells

### IL32 Antibody - Protocols

Provided below are standard protocols that you may find useful for product applications.

- [Western Blot](#)
- [Blocking Peptides](#)
- [Dot Blot](#)
- [Immunohistochemistry](#)
- [Immunofluorescence](#)
- [Immunoprecipitation](#)
- [Flow Cytometry](#)
- [Cell Culture](#)

### IL32 Antibody - Images



Western blot analysis of IL32 expression in Human tonsil lysate.